



EDUCATING LEARNERS FOR THE 21ST CENTURY

NOTICE OF PUBLIC HEARING

Rio School District hereby gives notice that a public hearing will be held as follows:

TOPIC OF HEARING: The District has initiated the process of establishing trustee areas and changing the method of electing members of the Board, to ensure full compliance with the California Voting Rights Act of 2001 (CVRA). Under Elections Code section 10010, prior to drafting any proposed trustee area maps the Board is required to conduct “at least two public hearings over a period of no more than 30 days, at which the public is invited to provide input regarding the composition of the districts.” These public hearings took place on January 19, 2022 and February 16, 2022. At the February 16, 2022 meeting the Board also adopted criteria to be used in the creation of draft maps.

After the most recent public hearing, the District’s demographer created draft maps, which were made available to the public at least seven (7) days prior to this meeting.

This is the time and place designated for the third public hearing, and the first of two after the creation of draft maps, for members of the public to have the opportunity to provide input regarding the draft maps and the proposed sequence of elections.

After the public hearing the Board will discuss the draft maps, and decide whether to narrow down the number of maps for consideration, and/or creation of additional draft maps.

MEETING DETAILS:

Date: Wednesday, March 16, 2022

Time: 6:00 p.m.

Location: Rio Vista Middle School, 3050 Thames River Dr. • Oxnard, CA 93036 or you can attend via zoom at rioschools.zoom.us/j/81494231821. **New Process for Making Public Comments:** We value your comments and have created several options to ensure your voice is heard.

Email: Members of the public are encouraged to submit public comments via email at scervantez@rioschools.org. Comments must be received by five (5:00 p.m.) on the day of the Board meeting.

Phone: If you are unable to email a public comment, please leave a phone message with your question or comment at (805) 485-3111 ext. 2102 prior to five (5:00 p.m.) on the day of the Board meeting.

In-Person: Members of the public can make their comment in-person at the Boardroom located at 1800 Solar Drive, 3rd floor, Oxnard, CA 93030. The maximum for any one speaker is three minutes. Due to seating configurations to meet social distancing guidelines **seating for the public is limited and based on CDC/CPH/VCPH guidelines**. Live video footage will be played in the overflow area right outside of the board room. **IMPORTANT:** Any individual attending the meeting **must follow CDC/CPH/VCPH County Public Health Guidelines and wear a mask. If you are displaying any symptoms of COVID-19 we ask that you please stay home and consult your health professional as to not expose others to the virus and instead submit your comment via email or voicemail per the instructions above. The Board assumes no liability for any health risks to members of the public who attend the Board meeting in-person. All individuals attending the meeting in-person do so at their own risk.**

For additional information, contact:

Sonia Cervantez

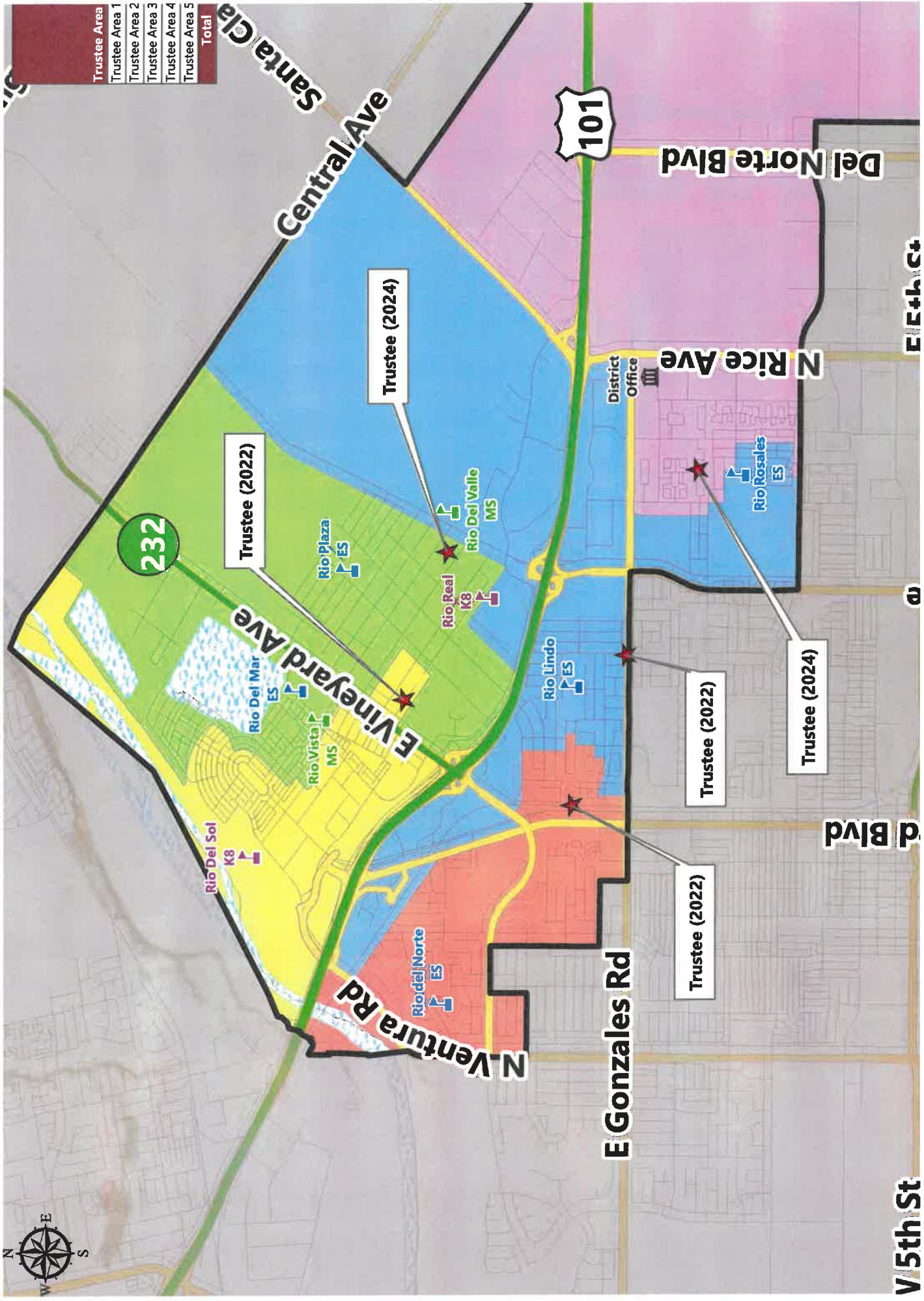
Executive Assistant to the Superintendent

scervantez@rioschools.org

(805) 485-3111 ext. 2102

RIO SCHOOL DISTRICT

CC



Trustee Area
Trustee Area 1
Trustee Area 2
Trustee Area 3
Trustee Area 4
Trustee Area 5
Total

RIO SCHOOL DISTRICT

CONCEPTUAL TRUSTEE AREAS - SCENARIO 1

Total Population:	42,743	Ideal Population:	8,549	Variance:	9.2%
--------------------------	---------------	--------------------------	--------------	------------------	-------------

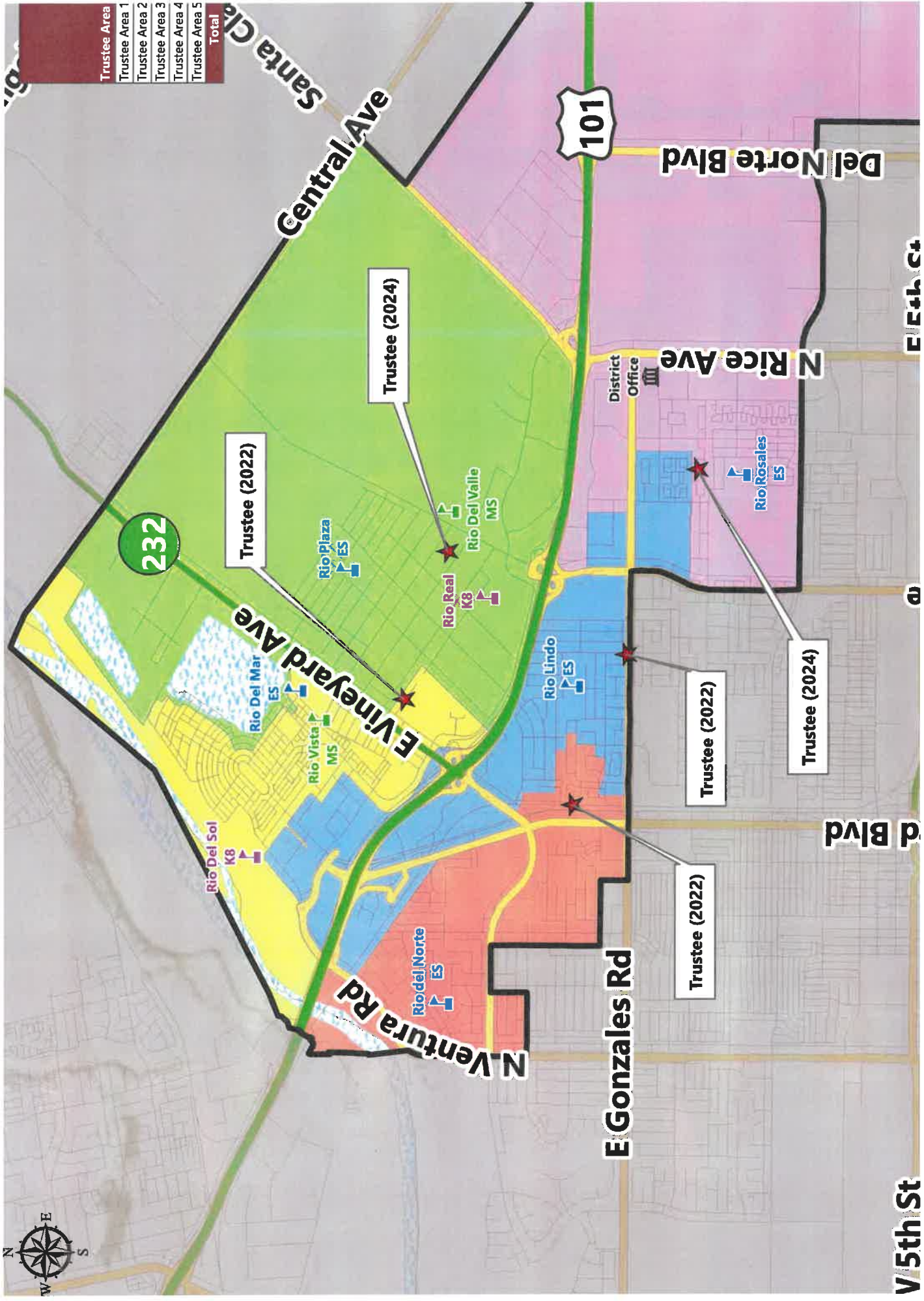
Total Population (2020 Census)					
	Trustee Area 1	Trustee Area 2	Trustee Area 3	Trustee Area 4	Trustee Area 5
Population	8,519	8,275	9,060	8,392	8,497
Population Variance	-30	-274	511	-157	-52
	-0.4%	-3.2%	6.0%	-1.8%	-0.6%
Hispanic/Latino	55.5%	78.8%	67.7%	75.5%	69.7%
White	24.5%	12.3%	18.0%	9.9%	13.0%
Black/ African American	3.7%	1.3%	2.8%	2.1%	3.3%
American Indian/ Alaska Native	0.0%	0.3%	0.2%	0.2%	0.2%
Asian	11.1%	4.7%	8.0%	9.8%	10.7%
Native Hawaiian/ Other Pacific Islander	0.5%	0.1%	0.4%	0.3%	0.2%
Other	0.5%	0.5%	0.5%	0.4%	0.5%
Two or More Races	4.2%	2.1%	2.4%	1.8%	2.3%

Population 18 and Over (2020 Census)					
	Trustee Area 1	Trustee Area 2	Trustee Area 3	Trustee Area 4	Trustee Area 5
Population	6,444	6,009	7,018	6,364	6,178
Hispanic/Latino	50.9%	76.9%	64.5%	72.0%	65.5%
White	28.4%	14.1%	20.8%	11.8%	15.6%
Black/ African American	3.9%	1.2%	3.0%	2.2%	3.8%
American Indian/ Alaska Native	0.0%	0.2%	0.2%	0.2%	0.2%
Asian	12.2%	5.4%	8.4%	11.3%	11.7%
Native Hawaiian/ Other Pacific Islander	0.5%	0.1%	0.3%	0.2%	0.2%
Other	0.5%	0.3%	0.3%	0.5%	0.6%
Two or More Races	3.6%	1.7%	2.3%	1.7%	2.5%

Citizens by Voting Age Population Estimate (2015-2019)					
	Trustee Area 1	Trustee Area 2	Trustee Area 3	Trustee Area 4	Trustee Area 5
Population	5,335	4,002	6,444	4,939	4,481
Hispanic/Latino	2,495	2,519	3,859	3,475	2,528
	46.8%	62.9%	59.9%	70.4%	56.4%
White	33.3%	27.2%	24.8%	13.9%	23.9%
Black/					

RIO SCHOOL DISTRICT

CC



Trustee Area
Trustee Area 1
Trustee Area 2
Trustee Area 3
Trustee Area 4
Trustee Area 5
Total

V 5th St

d Blvd

Trustee (2024)

Trustee (2022)

N Rice Ave

Del Norte Blvd

101

Central Ave

E Vineyard Ave

N. Ventura Rd

E Gonzales Rd

Trustee (2022)

Trustee (2024)

232

Rio Del Sol K8

Rio Vista MS

Rio Del Mar ES

Rio Plaza ES

Rio Real K8

Rio Del Valle MS

Rio Lindo ES

Rio del Norte ES

Rio Rosales ES

District Office

RIO SCHOOL DISTRICT

CONCEPTUAL TRUSTEE AREAS - SCENARIO 2

Total Population:	42,743	Ideal Population:	8,549	Variance:	6.6%
--------------------------	---------------	--------------------------	--------------	------------------	-------------

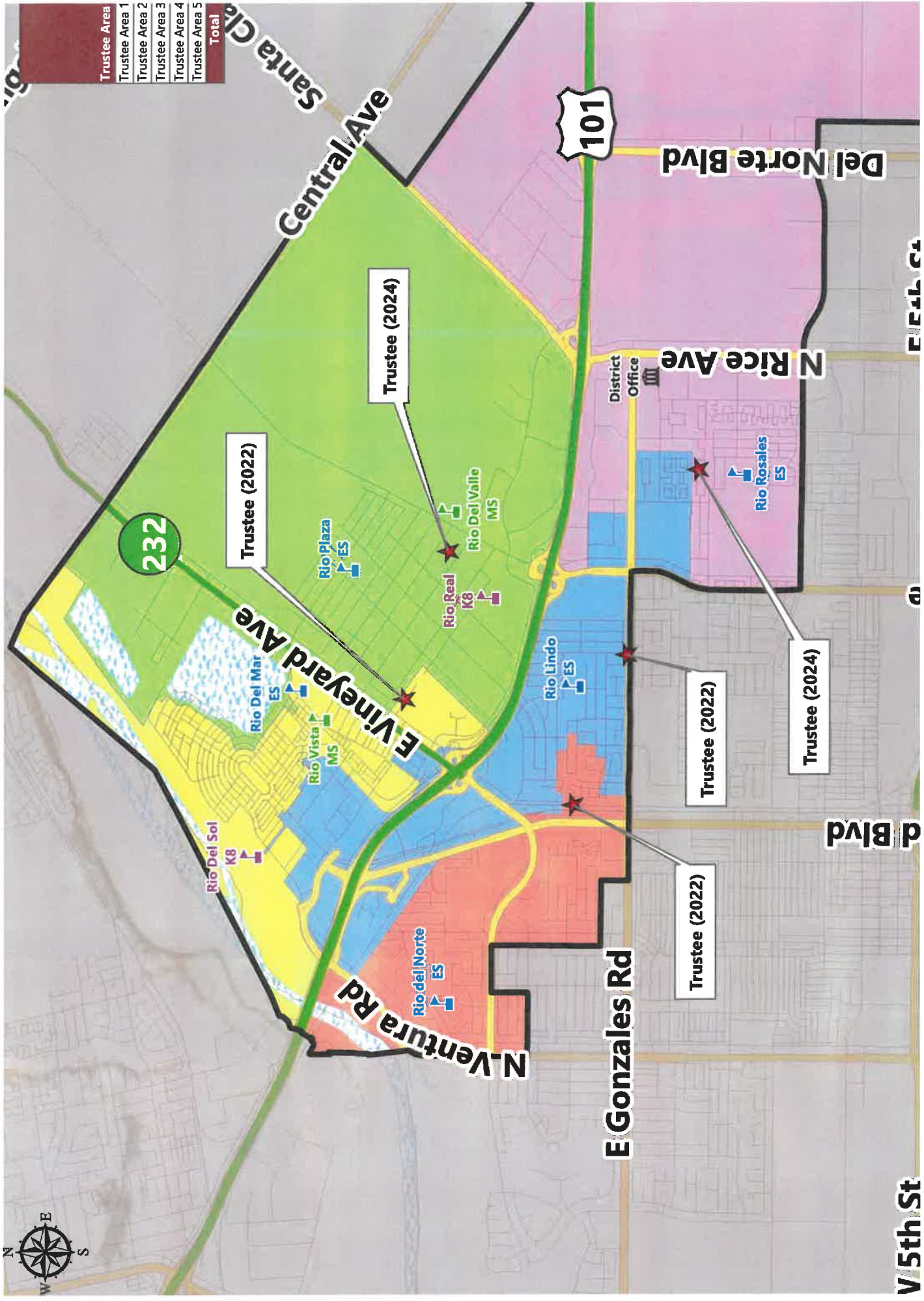
Total Population (2020 Census)					
	Trustee Area 1	Trustee Area 2	Trustee Area 3	Trustee Area 4	Trustee Area 5
Population	8,814	8,251	8,698	8,656	8,324
Population Variance	265	-298	149	107	-225
	3.1%	-3.5%	1.7%	1.3%	-2.6%
Hispanic/Latino	54.9%	89.2%	67.2%	65.5%	71.2%
White	23.2%	7.7%	18.2%	17.8%	10.5%
Black/ African American	3.3%	0.5%	2.8%	4.4%	2.0%
American Indian/ Alaska Native	0.1%	0.2%	0.2%	0.2%	0.2%
Asian	12.6%	1.3%	8.2%	8.5%	13.7%
Native Hawaiian/ Other Pacific Islander	0.4%	0.1%	0.4%	0.4%	0.1%
Other	0.8%	0.1%	0.5%	0.8%	0.3%
Two or More Races	4.7%	1.0%	2.5%	2.4%	2.1%

Population 18 and Over (2020 Census)					
	Trustee Area 1	Trustee Area 2	Trustee Area 3	Trustee Area 4	Trustee Area 5
Population	6,511	5,884	6,747	6,735	6,136
Hispanic/Latino	50.8%	87.8%	64.0%	61.2%	67.5%
White	26.5%	9.2%	20.9%	20.8%	12.7%
Black/ African American	3.5%	0.3%	3.0%	4.7%	2.2%
American Indian/ Alaska Native	0.1%	0.2%	0.3%	0.2%	0.2%
Asian	13.8%	1.5%	8.7%	9.5%	15.0%
Native Hawaiian/ Other Pacific Islander	0.5%	0.1%	0.4%	0.4%	0.1%
Other	0.6%	0.0%	0.4%	0.9%	0.3%
Two or More Races	4.1%	0.9%	2.4%	2.3%	2.0%

Citizens by Voting Age Population Estimate (2015-2019)					
	Trustee Area 1	Trustee Area 2	Trustee Area 3	Trustee Area 4	Trustee Area 5
Population	5,364	3,556	6,170	5,768	4,343
Hispanic/Latino	47.2%	71.3%	58.9%	61.9%	60.0%
White	31.2%	25.0%	25.2%	21.7%	19.8%
Black/ African American	4.1%	1.0%	4.5%	4.6%	3.6%

RIO SCHOOL DISTRICT

CC



Trustee Area
Trustee Area 1
Trustee Area 2
Trustee Area 3
Trustee Area 4
Trustee Area 5
Total

232

Trustee (2022)

Trustee (2024)

Trustee (2022)

Trustee (2024)

Trustee (2022)

V 5th St

E 4th St

01

d Blvd

V 5th St

RIO SCHOOL DISTRICT

CONCEPTUAL TRUSTEE AREAS - SCENARIO 3

Total Population:	42,743	Ideal Population:	8,549	Variance:	7.2%
--------------------------	---------------	--------------------------	--------------	------------------	-------------

Total Population (2020 Census)					
	Trustee Area 1	Trustee Area 2	Trustee Area 3	Trustee Area 4	Trustee Area 5
Population	8,700	8,251	8,602	8,866	8,324
Population Variance	151	-298	53	317	-225
	1.8%	-3.5%	0.6%	3.7%	-2.6%
Hispanic/Latino	54.6%	89.2%	67.2%	65.6%	71.2%
White	24.2%	7.7%	18.2%	16.9%	10.5%
Black/ African American	3.4%	0.5%	2.9%	4.3%	2.0%
American Indian/ Alaska Native	0.0%	0.2%	0.2%	0.2%	0.2%
Asian	12.0%	1.3%	8.2%	9.2%	13.7%
Native Hawaiian/ Other Pacific Islander	0.5%	0.1%	0.4%	0.4%	0.1%
Other	0.8%	0.1%	0.5%	0.8%	0.3%
Two or More Races	4.5%	1.0%	2.5%	2.7%	2.1%

Population 18 and Over (2020 Census)					
	Trustee Area 1	Trustee Area 2	Trustee Area 3	Trustee Area 4	Trustee Area 5
Population	6,466	5,884	6,683	6,844	6,136
Hispanic/Latino	50.6%	87.8%	63.9%	61.4%	67.5%
White	27.6%	9.2%	20.9%	19.7%	12.7%
Black/ African American	3.6%	0.3%	3.1%	4.5%	2.2%
American Indian/ Alaska Native	0.1%	0.2%	0.3%	0.2%	0.2%
Asian	13.1%	1.5%	8.8%	10.2%	15.0%
Native Hawaiian/ Other Pacific Islander	0.5%	0.1%	0.4%	0.4%	0.1%
Other	0.6%	0.0%	0.3%	0.9%	0.3%
Two or More Races	3.8%	0.9%	2.4%	2.6%	2.0%

Citizens by Voting Age Population Estimate (2015-2019)					
	Trustee Area 1	Trustee Area 2	Trustee Area 3	Trustee Area 4	Trustee Area 5
Population	5,337	3,556	6,107	5,858	4,343
Hispanic/Latino	46.9%	71.3%	58.8%	62.2%	60.0%
White	32.4%	25.0%	25.3%	20.5%	19.8%
Black/	4.2%	1.0%	4.6%	4.5%	3.6%